

Cut Your Own Poles

Using a standard circular saw, clamp, and 4x4" lumber you too can fashion quality jump poles.

Of course, if you live in California we strongly encourage you to [order poles at our online store](#).

They're round and precision-milled to 4" in diameter.

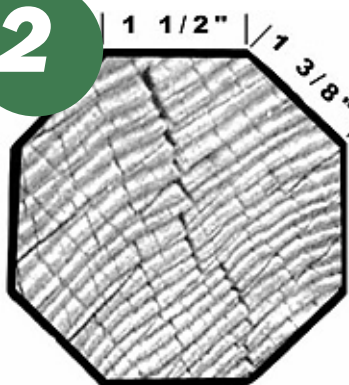
As with any project involving power tools, please wear safety goggles and read your owner's manual.

1



Adjust the fence of your circular saw to a 45° angle and securely clamp a small, square cut of wood against the fence. It is important that this guide wood be square to the fence. If this becomes a problem, consider using two clamps.

2



The goal is to make the width of the rip $1\frac{3}{8}$ ". We start with the guide wood high on the fence and work down until the desired width is reached (the triangle formed by the blade, fence and guide will be the area of wood removed).

With your lumber secure, start at one end of the rail, ensuring both the guide wood and fence are flush to the lumber. If this is your first piece, stop a few inches in to measure the rip.

3



4



Depending on your skill and what blade you mount on the saw, your cuts may look rough. Practice makes perfect. [Professionally-milled poles](#) make really perfect.

5



That's all there really is to it, but feel free to take it further—an orbital or belt sander and a can of paint will turn this into show material!